

**VikingLink** 

ENERGINET/DK | nationalgrid

---

# Viking Link Interconnector

Meeting with Parish Councils

January – March 2016

## Introductions

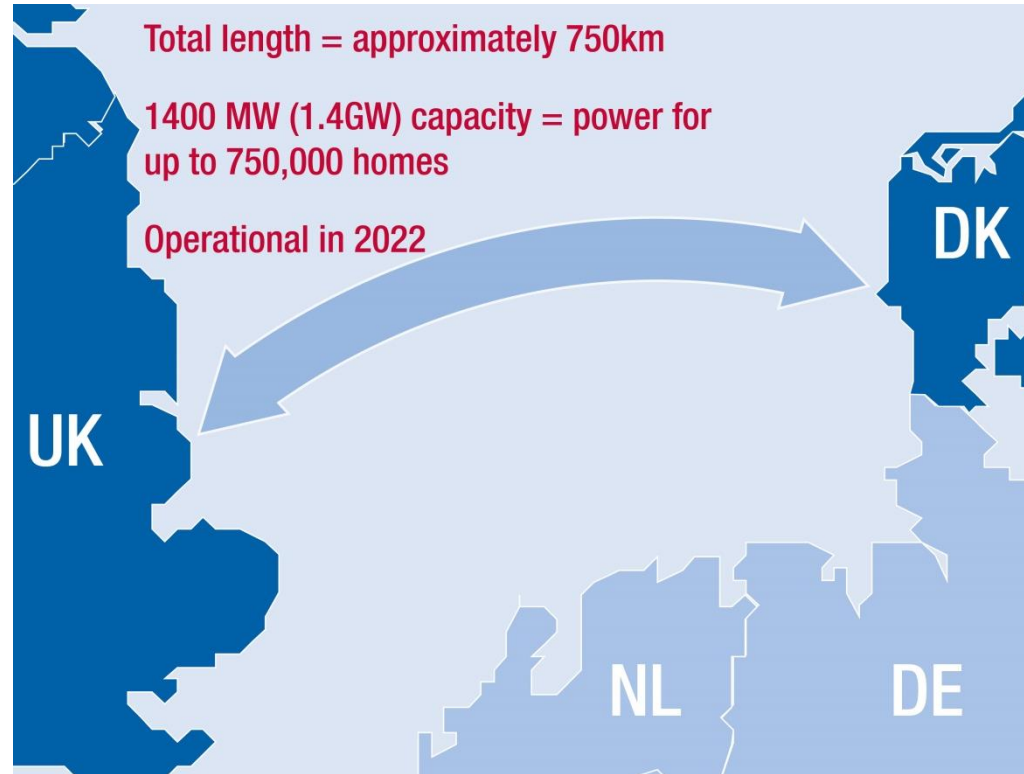
- David Moore – Project Manager
- Liz Wells – Consents Officer
- Donna Burnell – Community Relations

## Why we're here

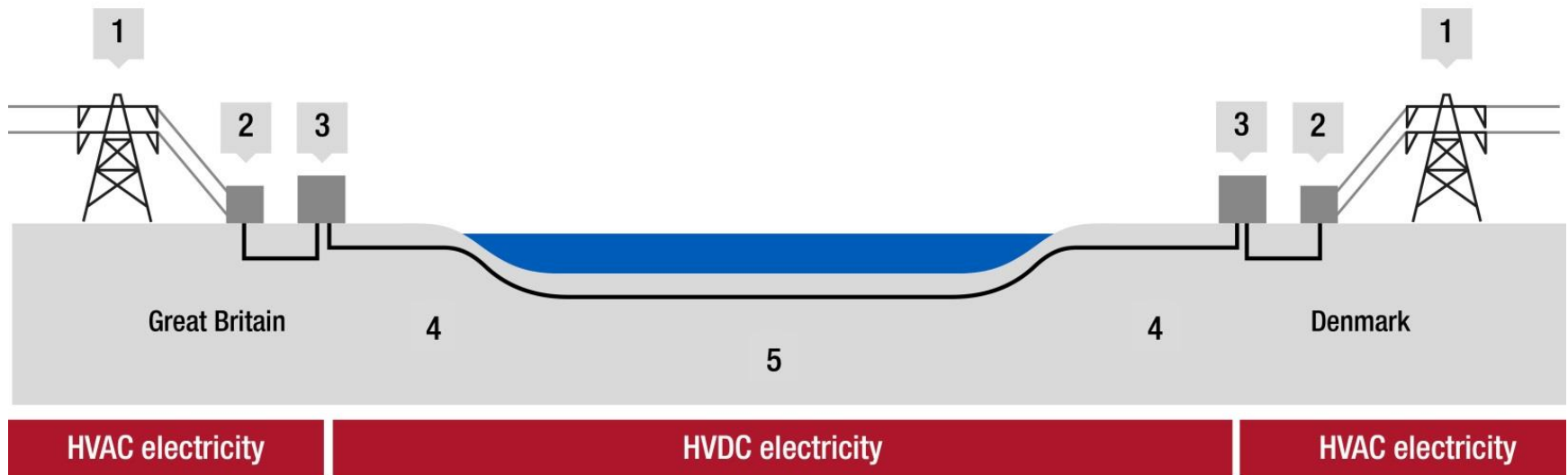
To introduce you to the Viking Link project and to seek your views on what is important to your community

## What is Viking Link?

- A proposal to build a High Voltage Direct Current (HVDC) electricity interconnector between Great Britain and Denmark
- Being developed by National Grid Viking Link Ltd with its Danish development partner Energinet.dk
- National Grid Viking Link Ltd is separate to National Grid Electricity Transmission Plc which has the licence to own and operate the high voltage electricity transmission system in England and Wales
- Energinet.dk owns, operates and develops the Danish electricity transmission systems. It owns and operates several interconnectors between Denmark and other countries



## What is an electricity interconnector?



1. Existing network
2. Substation
3. Converter station
4. Underground cables
5. Submarine cables

- HVAC = High Voltage Alternating Current
- HVDC = High Voltage Direct Current

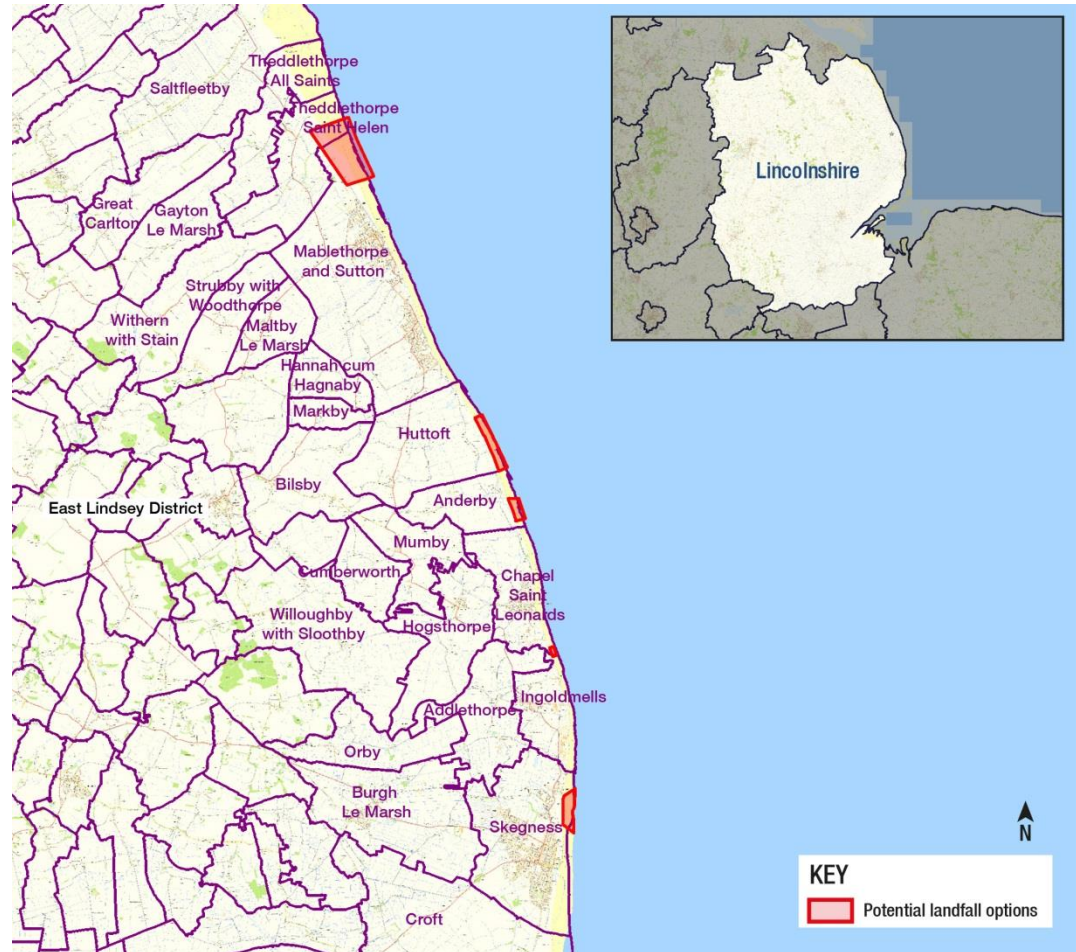


## UK onshore elements

- Bicker Fen substation has been identified as the most appropriate connection into the National Grid
- We need to identify where to bring the interconnector cables onshore
- We need to build a DC/AC converter station close to Bicker Fen substation. Options for converter station sites are being explored
- We want to consult with local communities to hear their views before identifying preferred landfall and converter station sites
- We will then identify cable route corridor options to connect the landfall site to the converter station, and the converter station to Bicker Fen substation

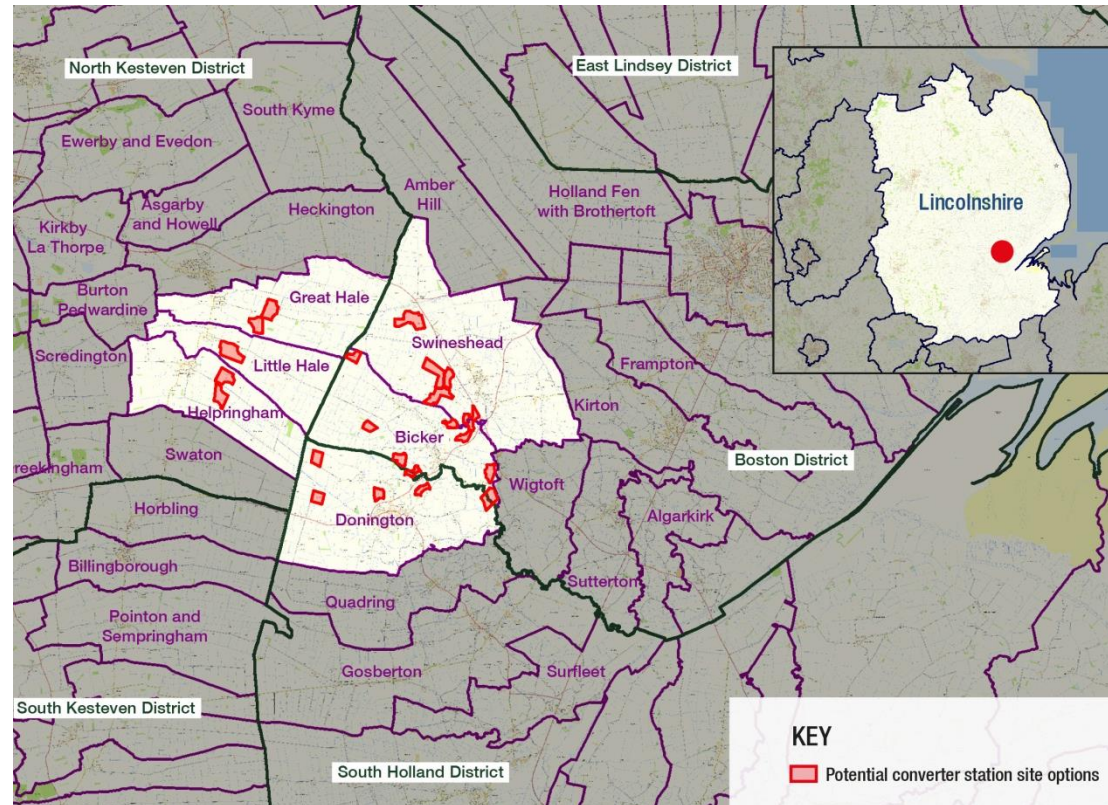
## Cable landing and routeing

- We are considering a number of options
  - Assessment of environmental constraints
  - Technical accessibility and feasibility study
  - Assessment of offshore cable route constraints
  - Discussions with parish councils
- We will consult with local communities, local authorities and other stakeholders



## Converter station

- We are considering a number of options
  - Assessment of environmental constraints
  - Accessibility for construction and operational traffic
  - Routing options for AC cable to Bicker Fen substation
  - Discussions with parish councils
- We will consult with local communities, local authorities and other stakeholders





## Cable routeing

- When we have identified our preferred landfall site, we will consider the options for an onshore DC cable route
  - Assessment of environmental constraints
  - Accessibility for construction traffic
  - Drainage and drain crossings
- We will consult with local communities, local authorities and other stakeholders

## What's important to your parish?

**Please let us know what is important in your area and to your local community**

**Please tell us if you have any other concerns**

**We will invite you to participate in our consultation later in the spring or you can tell us at any time by post, email or phone**

## How would you like us to engage?

- We will expect to start public consultation on potential landfall and converter station site options in spring 2016
- How best can we consult with the local community?
  - Public exhibitions in village halls
  - Meetings with landowners
  - Parish newsletters
  - Project website
  - Twitter
  - Other?



**Please let us know how best to engage with the local community**

## Questions

## Contact details

Email: [vikinglink@communityrelations.co.uk](mailto:vikinglink@communityrelations.co.uk)

Tel: 0800 731 0561

Web: [www.viking-link.com](http://www.viking-link.com)