



ENERGINET/DK | nationalgrid

Viking Link Interconnector

Members Briefing

March 2016

Introductions

- Mark Pearce – Licence and Consents Manager
- David Moore – Project Manager
- Liz Wells – Consents Officer
- Daniel James - Offshore Marine Manager
- Donna Burnell and Sam Cranston– Community Relations

Why we're here?

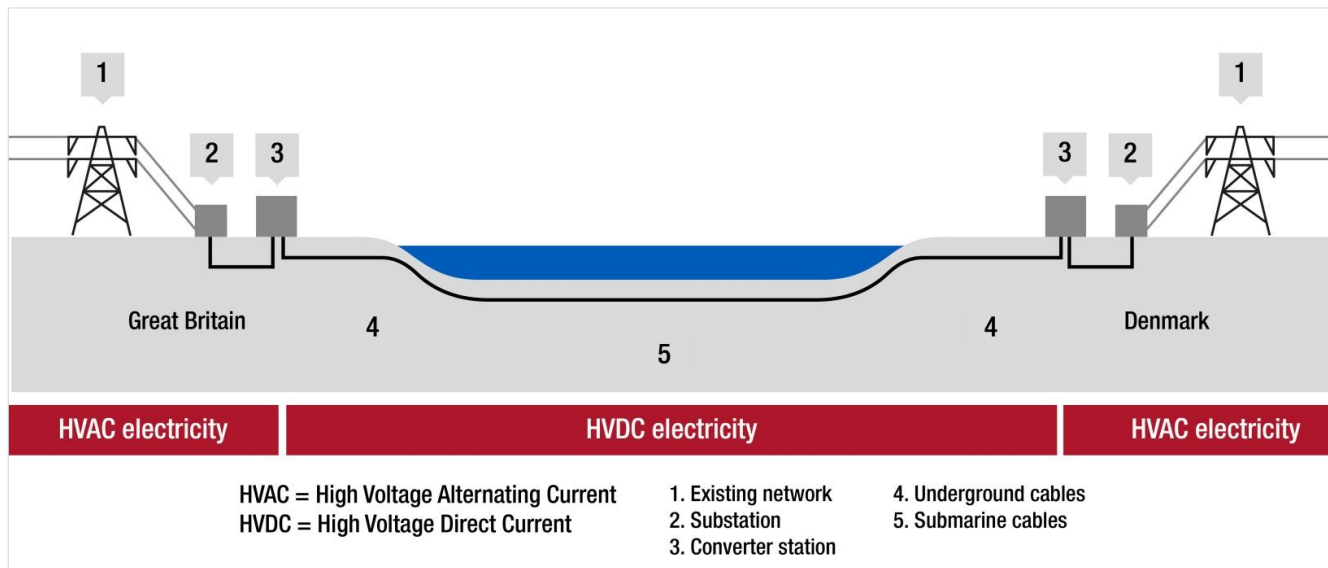
To introduce you to the Viking Link project, update you on our progress, to seek your views on what is important to your area and answer any questions you may have

What is Viking Link?

- Viking Link is an electricity interconnector project linking Great Britain with Denmark
- The project is being developed jointly by National Grid Viking Link Ltd with Danish development partner Energinet.dk
- National Grid Viking Link Ltd is a wholly owned subsidiary of National Grid Group and holds an interconnector licence. It is a legally and regulatory separate organisation to National Grid Electricity Transmission Plc (NGET) which has the licence to own and operate the high voltage electricity transmission system in England and Wales
- Energinet.dk owns, operates and develops the Danish electricity and gas transmission systems. It owns and operates several interconnectors between Denmark and other countries

What is Viking Link?

- Proposed HVDC interconnector linking Danish and British electrical systems
- Cabled for 760 kilometres between Bicker Fen, Lincolnshire in the UK and Revsing in Denmark
- Proposed capacity of 1.4 GW

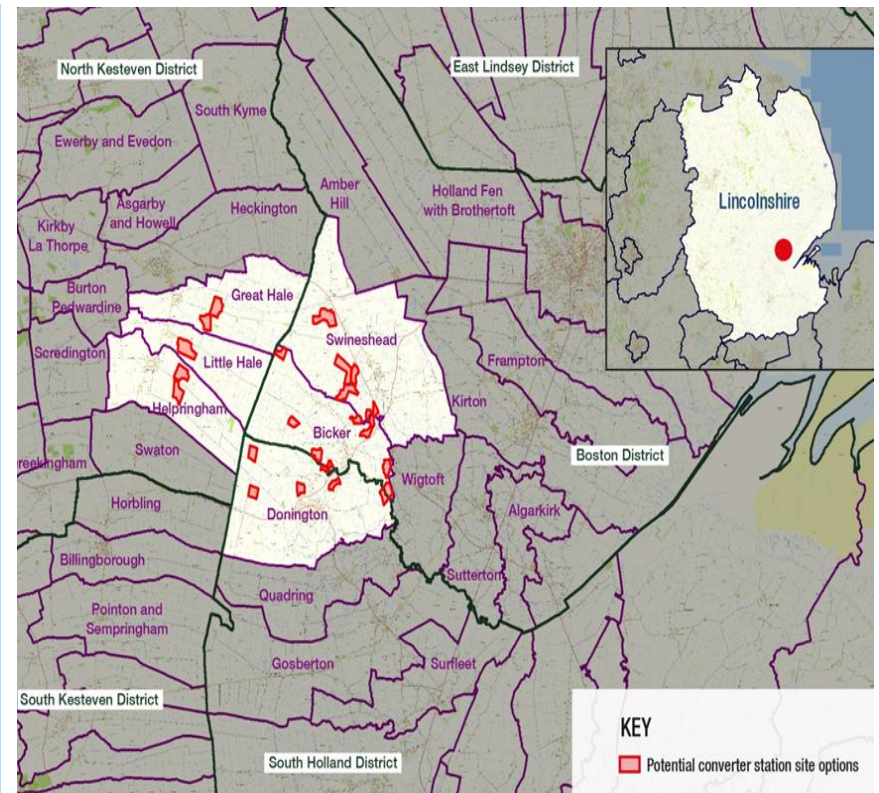
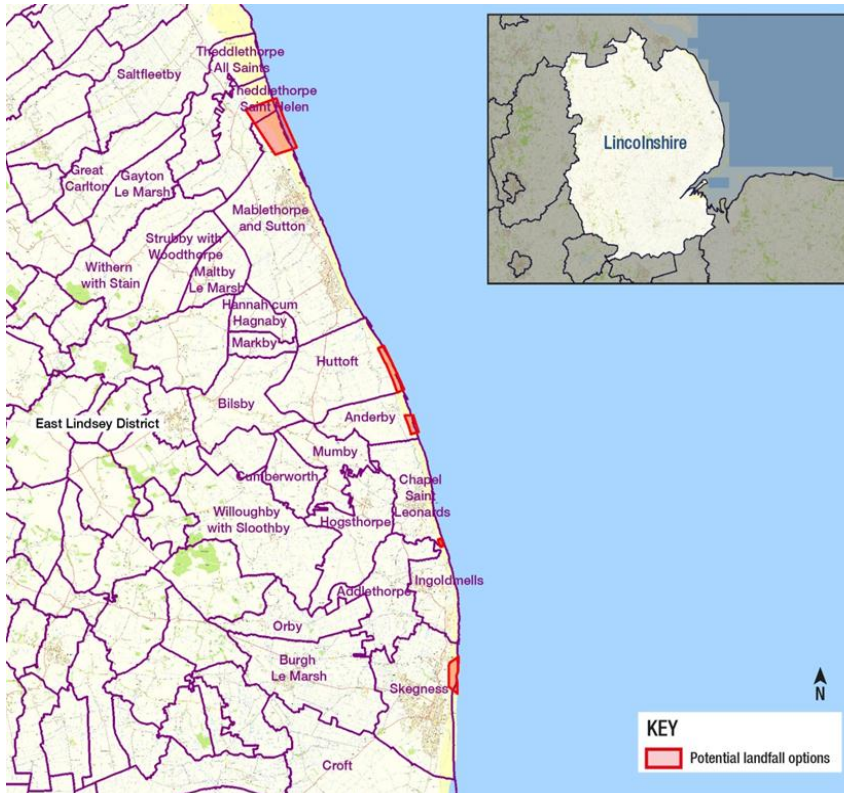


UK onshore elements

- Bicker Fen substation has been identified working with NGET as the most appropriate connection into the high voltage electricity transmission network
- We need to identify where to bring the pair of interconnector cables onshore
- We need to build a DC/AC converter station close to Bicker Fen substation. Options for where we could site the converter station sites are being explored
- We will be consulting with local communities and stakeholders to hear their views before identifying preferred landfall and converter station sites
- We will then identify cable routeing options to connect the landfall site to the converter station, and the converter station to Bicker Fen substation

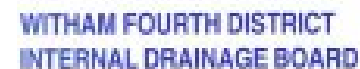
Landfall and converter station siting

Early desktop survey work identified a number of potential site options for a landfall (5) and for a converter station (21)



Landfall and converter station siting – engagement so far

- We have discussed the site options in detail with representatives from local authorities and statutory bodies
- We have met with parish and town councils to introduce the project and ask what is important in the local area around each potential site



Landfall

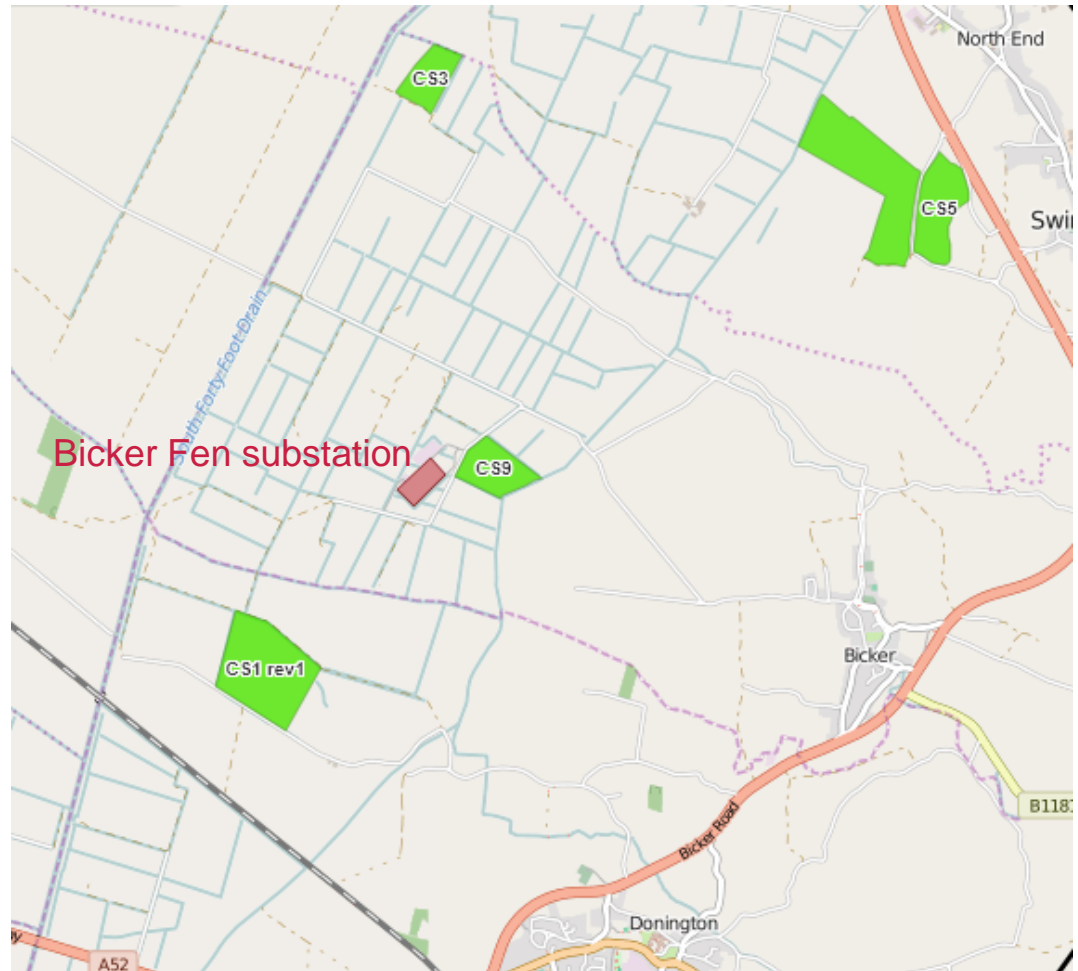
- Following these meetings, and taking information received into account, we have confirmed a shortlist of sites which we feel are the most appropriate options to take forward for public consultation
- Shortlisted landfall site options are:
 - LF1a
 - LF1
 - LF2



Converter Station

- Shortlisted converter station site options are:
 - CS1
 - CS3
 - CS5
 - CS9

We expect to start public consultation in April



Public consultation

- Early engagement with parish and town councils has helped to shape the plan for public consultation
- Public exhibitions will be held in parishes of shortlisted landfall and converter station site options
- Two phases of consultation:
 1. Phase one consultation will help us to identify our preferred landfall and converter station sites
 2. Phase two consultation (to be held in summer 2016) will help us identify our preferred cable route corridor option between the preferred landfall and converter station sites as well as help with the detailed design of the converter station
- We will consult with key organisations, landowners, elected representatives and the local community to help shape our proposals

Consenting

- We will be undertaking a full Environmental Impact Assessment (EIA) – Scoping likely Summer 2016
- We will need to submit a planning application for the onshore works and a marine licence application for the offshore route
- Onshore works will be submitted under the Town and Country Planning Act (TCPA) and do not constitute a Development Consent Order (DCO)
- Our Danish partner, Energinet.dk needs to carry out a similar process in Denmark
- Consents from German and Dutch authorities also required and are being coordinated under the TEN-E Regulations



Project timeline



Questions

Contact details

Email: vikinglink@communityrelations.co.uk

Tel: 0800 731 0561

Web: www.viking-link.com